



ECONOMIC / ENVIRONMENTAL OPPORTUNITIES

Identify and pursue economic opportunities that demonstrate respect for the environment and biodiversity

Nodi a manteisio ar gyfleoedd economaidd sy'n arddangos parch i'r amgylchedd a bioamrywiaeth

Valuing Our Environment

1



COMPETING DEMANDS

Reconcile competing demands for the use of key environmental assets.

Cysoni gofynion sy'n cystadlu â'i gilydd am ddefnyddio asedau amgylcheddol allweddol

Valuing Our Environment

2



CULTURAL OPPORTUNITIES

Pursue opportunities that demonstrate respect for the cultural, linguistic and historical resources of the area

Mynd ar ôl cyfleoedd sy'n arddangos parch i adnoddau diwylliannol, ieithyddol a hanesyddol yr ardal

Building Sustainable Communities

3



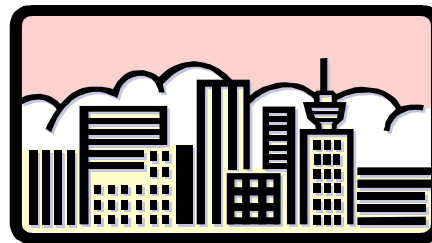
SERVICES

Support appropriate provision of services including health and care; education; affordable housing; shopping; culture and leisure

Cefnogi darpariaeth briodol o wasanaethau gan gynnwys iechyd a gofal; addysg; tai fforddiadwy; siopa; diwylliant a hamdden

Building Sustainable Communities

4



TOWNS

Co-operate to identify and strengthen regional towns

Cydweithio i nodi a chryfhau trefi rhanbarthol

Building Sustainable Communities

5



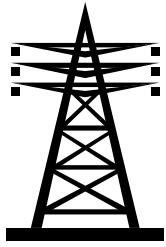
LINKAGES

Strengthen linkages between towns and rural areas identifying local centres where service provision can be optimised

Cryfhau cysylltiadau rhwng trefi ac ardaloedd gwledig gan nodi canolfannau lleol lle gellir gwella ar ddarparu gwasanaethau

Building Sustainable Communities

6



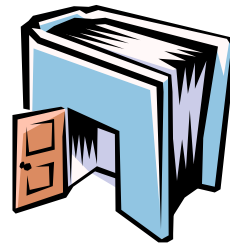
INFRASTRUCTURE

Identify infrastructure capacity constraints

Nodi cyfyngiadau o ran adnoddau yr isadeiledd

Building Sustainable Communities

7



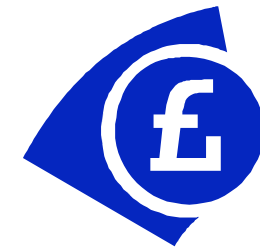
THE KNOWLEDGE ECONOMY

Enhance R&D, innovation, the knowledge economy, and HE & FE potential as motors for economic development

Gwella YaD, arloesedd, yr economi gwybodaeth, a photensial Addysg Bellach ac Addysg Uwch fel sbardunau ar gyfer datblygiad economaidd

Building Sustainable Communities

8



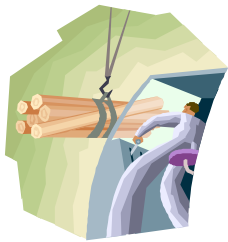
ECONOMIC DEVELOPMENT

Support economic development linked to indigenous potential, SME's and quality of life

Cefnogi datblygiad economaidd sy'n gysylltiedig â photensial cynhenid, MBCh ac ansawdd bywyd

Increasing & Spreading Prosperity

9



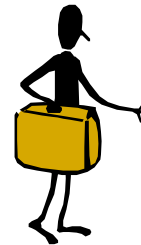
ADDED VALUE

Maximise potential to add value to agricultural and forestry products

Manteisio ar botensial i ychwanegu gwerth at gynhyrchion amaethyddol a choedwigaeth

Increasing & Spreading Prosperity

10



TOURISM

Promote tourism linked to environment and cultural heritage of the area

Hyrwyddo twristiaeth sy'n gysylltiedig â'r amgylchedd a threftadaeth ddiwylliannol yr ardal

Increasing & Spreading Prosperity

11



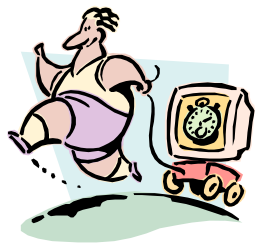
SKILLED PEOPLE

Devise strategies to retain and attract back skilled people

Dyfeisio strategaethau i gadw a denu pobl fedrus yn ôl.

Increasing & Spreading Prosperity

12

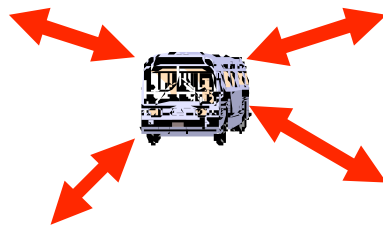


TRAVEL TIMES

Seek incremental improvements to travel times to neighbouring zones without jeopardising the quality of the natural environment

Chwilio am welliannau i amserau teithio i gylchfaoedd cymdogol heb effeithio ar ansawdd yr amgylchedd naturiol

Achieving Sustainable Accessibility **13**

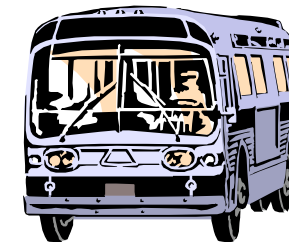


TRANSPORT HUBS

Establish regional and local transport hubs

Sefydlu canolbwyntiau cludiant rhanbarthol a lleol

Achieving Sustainable Accessibility **14**



TRANSPORT SERVICES

Support appropriate provision of public and community transport services

Cefnogi darparu gwasanaethau cludiant cyhoeddus a chymunedol priodol

Achieving Sustainable Accessibility **15**



DEVELOPMENT

Identify development opportunities which respect the environment including the coastal and maritime environment

Nodi cyfleoedd datblygu sy'n parchu'r amgylchedd gan gynnwys yr amgylchedd arforol ac arfordirol

COLLABORATIVE WORK

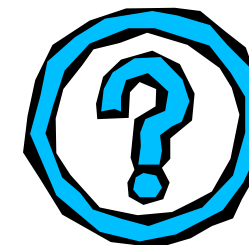


RURAL / URBAN LINKS

Identify and strengthen the linkages between towns and rural areas to provide economic opportunities and services

Nodi a chryfhau'r cysylltiadau rhwng trefi ac ardaloedd gwledig i ddarparu cyfleoedd economaidd a gwasanaethau

COLLABORATIVE WORK



GROWTH

Establish the conditions necessary to support the continued growth of the area whilst respecting cultural and environmental capacities

Sefydlu'r amodau sy'n angenrheidiol i gefnogi twf cynyddol o'r ardal tra'n parchu adnoddau diwylliannol ac amgylcheddol

COLLABORATIVE WORK



KNOWLEDGE ECONOMY

Examine the potential for the knowledge economy to act as a driver of development

Ymchwilio y potensial i'r economi gwybodaeth weithredu fel sbardun ar gyfer datblygiad

FUTURE COLLABORATION



ABERYSTWYTH

Strengthen the role of Aberystwyth as regional centre for Mid Wales

Cryfhau rôl Aberystwyth fel canolfan ranbarthol i Ganolbarth Cymru

FUTURE COLLABORATION

ADD / YCHWANEGIAD:

Achieving Sustainable Accessibility

ADD / YCHWANEGIAD:

ADD / YCHWANEGIAD:

ADD / YCHWANEGIAD:

Valuing Our Environment

Increasing & Spreading Prosperity

Building Sustainable Communities

ADD / YCHWANEGIAD:

Valuing Our Environment

ADD / YCHWANEGIAD:

Increasing & Spreading Prosperity

ADD / YCHWANEGIAD:

Building Sustainable Communities

ADD / YCHWANEGIAD:

Achieving Sustainable Accessibility

ADD / YCHWANEGIAD:

Building Sustainable Communities

ADD / YCHWANEGIAD:

Achieving Sustainable Accessibility

ADD / YCHWANEGIAD:

ADD / YCHWANEGIAD:

ADD / YCHWANEGIAD:

Valuing Our Environment

Increasing & Spreading Prosperity

Building Sustainable Communities

ADD / YCHWANEGIAD:

ADD / YCHWANEGIAD:

ADD / YCHWANEGIAD:

Achieving Sustainable Accessibility

Valuing Our Environment

Increasing & Spreading Prosperity