



ECONOMIC / ENVIRONMENTAL OPPORTUNITIES

Identify and pursue economic opportunities that demonstrate respect for the environment and biodiversity

Nodi a manteisio ar gyfleoedd economaidd sy'n arddangos parch i'r amgylchedd a bioamrywiaeth

Valuing Our Environment

1



COMPETING DEMANDS

Reconcile competing demands for the use of key environmental assets.

Cysoni gofynion sy'n cystadlu â'i gilydd am ddefnyddio asedau amgylcheddol allweddol

Valuing Our Environment

2



CULTURAL OPPORTUNITIES

Pursue opportunities that demonstrate respect for the cultural, linguistic and historical resources of the area

Mynd ar ôl cyfleoedd sy'n arddangos parch i adnoddau diwylliannol, ieithyddol a hanesyddol yr ardal

Building Sustainable Communities

3



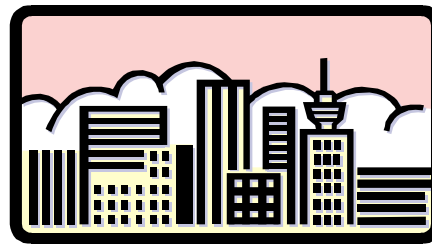
SERVICES

Support appropriate provision of services including health and care; education; affordable housing; shopping; culture and leisure

Cefnogi darpariaeth briodol o wasanaethau gan gynnwys iechyd a gofal; addysg; tai fforddiadwy; siopa; diwylliant a hamdden

Building Sustainable Communities

4



TOWNS

Co-operate to identify and strengthen regional towns

Cydweithio i nodi a chryfhau trefi rhanbarthol

Building Sustainable Communities

5



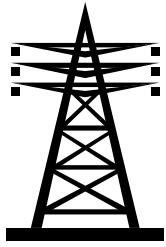
LINKAGES

Strengthen linkages between towns and rural areas identifying local centres where service provision can be optimised

Cryfhau cysylltiadau rhwng trefi ac ardaloedd gwledig gan nodi canolfannau lleol lle gellir gwella ar ddarparu gwasanaethau

Building Sustainable Communities

6



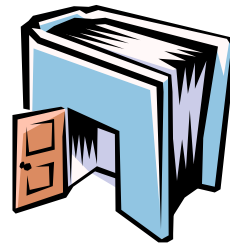
INFRASTRUCTURE

Identify infrastructure capacity constraints

Nodi cyfyngiadau o ran adnoddau yr isadeiledd

Building Sustainable Communities

7



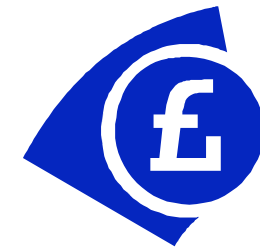
THE KNOWLEDGE ECONOMY

Enhance R&D, innovation, the knowledge economy, and HE & FE potential as motors for economic development

Gwella YaD, arloesedd, yr economi gwybodaeth, a photensial Addysg Bellach ac Addysg Uwch fel sbardunau ar gyfer datblygiad economaidd

Building Sustainable Communities

8



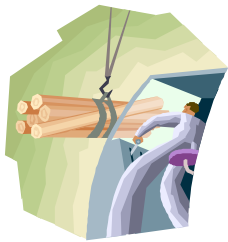
ECONOMIC DEVELOPMENT

Support economic development linked to indigenous potential, SME's and quality of life

Cefnogi datblygiad economaidd sy'n gysylltiedig â photensial cynhenid, MBCh ac ansawdd bywyd

Increasing & Spreading Prosperity

9



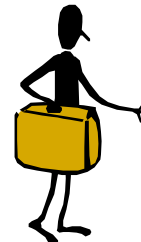
ADDED VALUE

Maximise potential to add value to agricultural and forestry products

Manteisio ar botensial i ychwanegu gwerth at gynhyrchion amaethyddol a choedwigaeth

Increasing & Spreading Prosperity

10



TOURISM

Promote tourism linked to environment and cultural heritage of the area

Hyrwyddo twristiaeth sy'n gysylltiedig â'r amgylchedd a threftadaeth ddiwylliannol yr ardal

Increasing & Spreading Prosperity

11



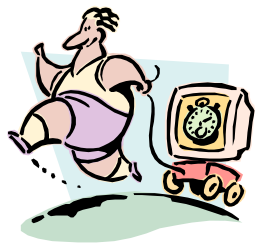
SKILLED PEOPLE

Devise strategies to retain and attract back skilled people

Dyfeisio strategaethau i gadw a denu pobl fedrus yn ôl.

Increasing & Spreading Prosperity

12

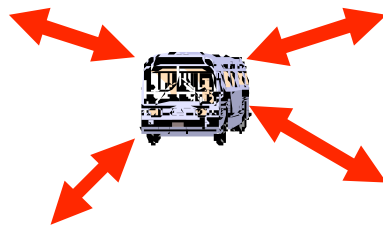


TRAVEL TIMES

Seek incremental improvements to travel times to neighbouring zones without jeopardising the quality of the natural environment

Chwilio am welliannau i amserau teithio i gylchfaoedd cymdogol heb effeithio ar ansawdd yr amgylchedd naturiol

Achieving Sustainable Accessibility **13**

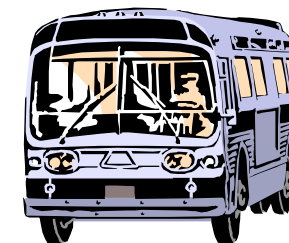


TRANSPORT HUBS

Establish regional and local transport hubs

Sefydlu canolbwyntiau cludiant rhanbarthol a lleol

Achieving Sustainable Accessibility **14**



TRANSPORT SERVICES

Support appropriate provision of public and community transport services

Cefnogi darparu gwasanaethau cludiant cyhoeddus a chymunedol priodol

Achieving Sustainable Accessibility **15**



EMPLOYMENT OPPORTUNITIES

Identify employment opportunities linked to the resource base, tourism and small business connected to lifestyle

Nodi cyfleoedd yn ymwneud â chyflogaeth sy'n gysylltiedig â'r sail adnoddau, twristiaeth a busnesau bychain sy'n gysylltiedig â ffordd o fyw

COLLABORATIVE WORK

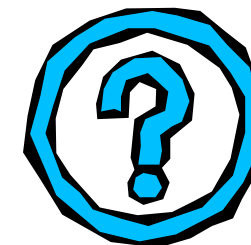


RURAL/URBAN COOPERATION

Strengthen the area by promoting co-operative working between settlements and their rural hinterlands to increase the range of opportunities and services provided

Cryfhau yr ardal drwy hyrwyddo cydweithio rhwng aneddiadau a'r cefn gwlad o'u cwmpas i gynyddu'r amrediad o gyfleoedd a gwasanaethau a ddarperir

COLLABORATIVE WORK



CROSS BORDER

Identify opportunities for cross border collaboration to increase social and economic opportunities

Nodi cyfleoedd ar gyfer cydweithredu ar draws ffiniau i gynyddu cyfleoedd cymdeithasol ac economaidd

COLLABORATIVE WORK



TRANSPORT

Establish transport requirements necessary to support the linked towns

Sefydlu gofynion cludiant sy'n angenrheidiol i gefnogi'r trefi a gysylltir

FUTURE COLLABORATION



ENVIRONMENTAL CAPACITY

Establish the environmental capacity for renewable energy generation

Sefydlu'r adnoddau amgylcheddol ar gyfer cynhyrchu egni adnewyddadwy

FUTURE COLLABORATION

ADD / YCHWANEGIAD:

Achieving Sustainable Accessibility

ADD / YCHWANEGIAD:

ADD / YCHWANEGIAD:

ADD / YCHWANEGIAD:

Valuing Our Environment

Increasing & Spreading Prosperity

Building Sustainable Communities

ADD / YCHWANEGIAD:

Valuing Our Environment

ADD / YCHWANEGIAD:

Increasing & Spreading Prosperity

ADD / YCHWANEGIAD:

Building Sustainable Communities

ADD / YCHWANEGIAD:

Achieving Sustainable Accessibility

ADD / YCHWANEGIAD:

Building Sustainable Communities

ADD / YCHWANEGIAD:

Achieving Sustainable Accessibility

ADD / YCHWANEGIAD:

ADD / YCHWANEGIAD:

ADD / YCHWANEGIAD:

Valuing Our Environment

Increasing & Spreading Prosperity

Building Sustainable Communities

ADD / YCHWANEGIAD:

ADD / YCHWANEGIAD:

ADD / YCHWANEGIAD:

Achieving Sustainable Accessibility

Valuing Our Environment

Increasing & Spreading Prosperity