



**COMPETING DEMANDS/GOFYNION SY'N CYSTADLU Â'U GILYDD**

Reconcile competing demands for the use of key environmental assets including National Parks

Cysoni gofynion sy'n cystadlu â'i gilydd am ddefnyddio asedau amgylcheddol allweddol gan gynnwys Parciau Cenedlaethol

Valuing Our Environment

1



**BROWNFIELD DEVELOPMENT/DAT-BLYGU TIR LLWYD**

Maximise use of brownfield development opportunities to minimise impact on the environment.

Gwneud y defnydd mwyaf posibl o gyfleoedd i ddatblygu meysydd brown i gadw'r effaith ar yr amgylchedd i isafswm

Valuing Our Environment

2



**OPPORTUNITIES/CYFLEOEDD**

Identify key centres, networks and linkages to increase the range of social and economic opportunities e.g. health.

Nodi canolfannau allweddol, rhwydweithiau a chysylltiadau i gynyddu amrediad y cyfleoedd cymdeithasol ac economaidd e.e. iechyd

Building Sustainable Communities

3



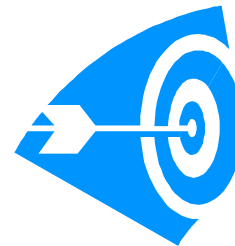
**INTEGRATION/INTEGREIDDIO**

Establish strategies to connect and integrate areas of deprivation with successful areas

Sefydlu strategaethau i gysylltu ac integreiddio ardaloedd o amddifadedd gydag ardaloedd llwyddiannus

Building Sustainable Communities

4



**CENTRES/CANOLFANNAU**

Identify key centres with potential for focusing public investment to maximum effect.

Nodi canolfannau allweddol gyda photensial iganolbwyntio buddsoddiad cyhoeddus i gael yr effaith fwyaf posibl

Building Sustainable Communities

5



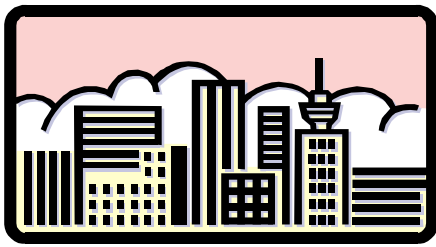
**DISTINCTIVENESS/ARWAHANRWYDD**

Ensure that development respects the cultural, linguistic and historical distinctiveness of the area

Sicrhau bod datblygiad yn parhau arwahannerwydd diwylliannol, ieithyddol a hanesyddol yr ardal

Building Sustainable Communities

6



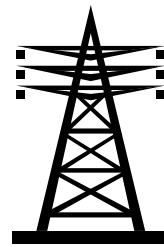
**URBAN AREA PERFORMANCE/PERFFORMIAD ARDALOEDD TREFOL**

Potential for urban areas to improve performance, increasing prosperity of the zone as a whole

Potensial i ardaloedd trefol wella perfformiad gan gynyddu ffyniant y parth yn gyffredinol

Building Sustainable Communities

7



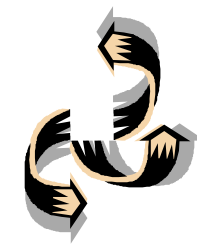
**INFRASTRUCTURE/SEILWAITH**

Identify infrastructure capacity constraints

Nodi cyfyngiadau o ran adnoddau isadeiledd

Building Sustainable Communities

8



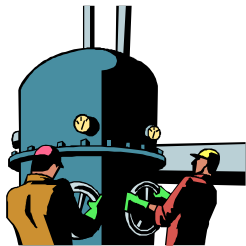
**NEIGHBOURING ZONES/ARDALOEDD CYFAGOS**

Strengthen as a location for more balanced development with neighbouring zones

Cryfhau fel lleoliad ar gyfer datblygiad mwy cytbwys gyda chylchfaoedd cyfagos

Increasing & Spreading Prosperity

9



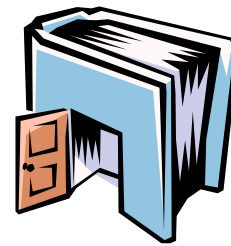
**EMPLOYMENT AND GROWTH/CYFLOGAETH A THWF**

Promote public sector employment and SME growth

Hyrwyddo cyflogaeth yn y sector cyhoeddus a thwf MBCh

Increasing & Spreading Prosperity

10



**THE KNOWLEDGE ECONOMY/YR ECONOMI GWYBODAETH**

Enhance R&D, innovation, the knowledge economy, and HE & FE potential as motors for economic development

Gwella YaD, arloesedd, yr economi wybodaeth, a photensial Addysg Bellach ac Addysg Uwch fel sbardunau ar gyfer datblygiad economaidd

Increasing & Spreading Prosperity

11



**IRISH LINKS/CYSYLLTIADAU GWYDDE-LIG**

Support employment activities related to Irish links

Cefnogi gweithgareddau cyflogaeth sy'n gysylltiedig â chysylltiadau Gwyddelig

Increasing & Spreading Prosperity

12



**THE CULTURAL ECONOMY/YR ECONOMI  
DIWYLLIANNOL**

Identify potential for economic activity linked to cultural, linguistic, environmental assets and historical heritage

Nodi potensial ar gyfer gweithgaredd economaidd sy'n gysylltiedig ag asedau diwylliannol, ieithyddol, amgylcheddol a threftadaeth hanesyddol

Increasing & Spreading Prosperity

**13**



**SKILLS/SGILIAU**

Enhance skills base of the area

Gwella sail sgiliau yr ardal

Increasing & Spreading Prosperity

**14**



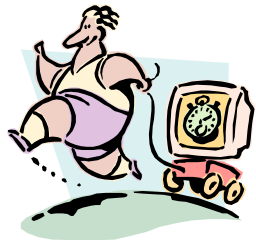
**LINKAGES/CYSYLLTEDDAU**

Strengthen linkages within the zone and between zones to maximise potential

Cryfhau cysylltiadau o fewn y parth a rhwng parthau i fanteisio i'r eithaf ar botensial

Achieving Sustainable Accessibility

**15**



**TRAVEL TIMES/AMSERAU TEITHIO**

Improve travel times to the east

Gwella amserau teithio i'r dwyrain

Achieving Sustainable Accessibility

**16**



**TRANSPORT TO IRELAND/CLUDIANT I  
IWERDDON**

Support improved road, ferry, and rail connectivity to Ireland

Cefnogi gwell cysylltiadau ffyrdd, fferi a rheilffyrdd i Iwerddon

Achieving Sustainable Accessibility

**17**



**TRANSPORT HUBS/CANOLFANNAU CLU-  
DIANT**

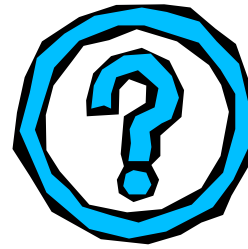
Identify and strengthen regional and local transport hubs

Nodi a chryfhau canolbwyntiau cludiant rhanbarthol a lleol

Achieving Sustainable Accessibility

**18**

SB



Maximise the potential of Swansea Bay to provide Leadership to South West Wales including enhancing the role of Swansea as the regional centre.

Manteisio i'r eithaf ar botensial Bae Abertawe i ddarparu arweiniad Dde Orllewin Cymru gan gynnwys gwella rôl Abertawe fel y ganolfan ranbarthol

Increasing & Spreading Prosperity **A**

SB



Strengthen the performance of Swansea Bay to increase prosperity within the region and stimulate development further west

Cryfhau perfformiad Bae Abertawe i gynyddu ffyniant o fewn y rhanbarth ac ysgogi datblygiad ymhellach i'r gorllewin

Building Sustainable Communities **B**

SB

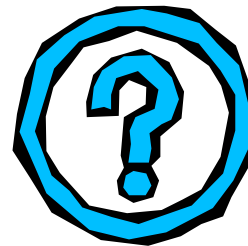


Identify opportunities for Swansea Bay to share in the success of the South East Wales area

Nodi cyfleoedd i Fae Abertawe rannu llwydiant ardal De Ddwyrain Cymru

FUTURE COLLABORATION **C**

SB



Identify and develop mechanisms to increase prosperity in disadvantaged areas

Nodi a datblygu mecanweithiau i gynyddu ffyniant mewn ardaloedd dan anfantais

FUTURE COLLABORATION **D**

SB



Selectively enhance the environment of former industrial areas

Gwella detholedig amgylchedd cyn ardaloedd diwydiannol

FUTURE COLLABORATION **E**

**ADD / YCHWANEGIAD:**

**Valuing Our Environment**

**ADD / YCHWANEGIAD:**

**Increasing & Spreading Prosperity**

**ADD / YCHWANEGIAD:**

**Building Sustainable Communities**

**ADD / YCHWANEGIAD:**

**Achieving Sustainable Accessibility**

**ADD / YCHWANEGIAD:**

**Building Sustainable Communities**

**ADD / YCHWANEGIAD:**

**Achieving Sustainable Accessibility**

**ADD / YCHWANEIAD:**

**ADD / YCHWANEIAD:**

**ADD / YCHWANEIAD:**

**Valuing Our Environment**

**Increasing & Spreading Prosperity**

**Building Sustainable Communities**

**ADD / YCHWANEIAD:**

**ADD / YCHWANEIAD:**

**ADD / YCHWANEIAD:**

**Achieving Sustainable Accessibility**

**Valuing Our Environment**

**Increasing & Spreading Prosperity**